



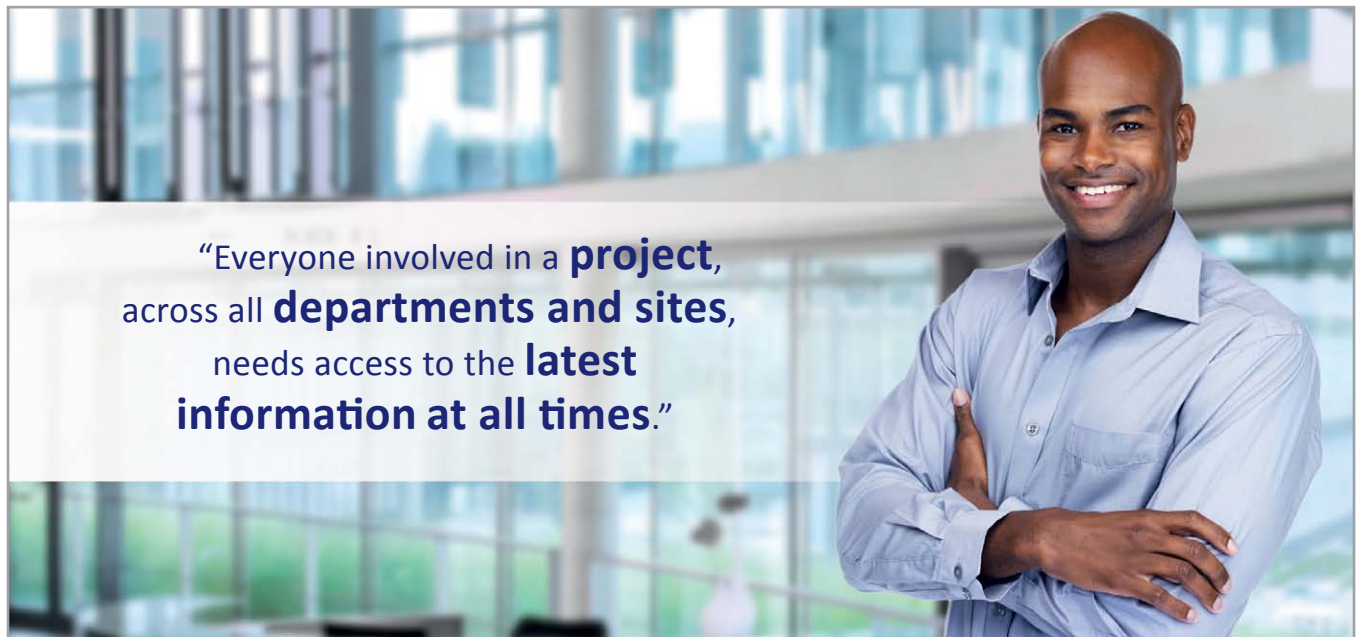
Business
Software
for People

cc | project

FULLY INTEGRATED WITH MICROSOFT DYNAMICS NAV
PROJECT CONTROLLING WITH PLANNING AND RELEASE PROCESSES
COSTS AND RESULTS PLANNING ELECTRONIC EXCHANGE OF SPECIFICATIONS | GAEB | ÖNORM
PROJECT WORKFLOW PLANNING AND SCHEDULING
SIMULTANEOUS COSTING COMPLETE MONITORING OF PROJECT MANAGEMENT | PROGRESS CONTROLLING
BIDIRECTIONAL INTERFACE TO MICROSOFT PROJECT
FLEXIBLE PROJECT STRUCTURE PLAN
PROCESSING AND COSTING OF SPECIFICATIONS CAPACITY AND RESOURCE PLANNING
PROJECT ACCOUNTING | COSTS | PAYMENT PLAN WITH PREPAYMENTS
MEASUREMENT MANAGEMENT AND CONSTRUCTION PROCESSING

Microsoft Partner
Gold Enterprise Resource Planning

COMPANY PORTRAIT



“Everyone involved in a **project**, across all **departments and sites**, needs access to the **latest information at all times.**”

COSMO CONSULT specialises in the implementation and system management of **industry and business solutions** based on cutting-edge software technologies. We deliver industry-oriented complete solutions for midsize businesses in the manufacturing, service and retail industries by providing an extensive range of industry-specific and special solutions based on **Microsoft Dynamics** and **QlikView**.

We offer our customers over 18 years of national and international project experience in the implementation of **Microsoft Dynamics NAV** (previously Navision) and **Microsoft Dynamics AX** (previously Axapta) ERP solutions. We are also experts in the **Microsoft Dynamics CRM** customer relationship management system and the **Microsoft SharePoint** document management and portal system, which can be integrated seamlessly into the ERP system environment. We therefore deliver fully integrated software systems for use in all areas of the company. With the aid of the **QlikView business intelligence solution**, our customers are able to access all of their company data in a structured and manageable format at any time.

An **implementation method** tailored to the project is a prerequisite for successful software implementation. For over 15 years, we have placed our trust in proven implementation methods when implementing our software projects, such as **SureStep** for successful ERP project implementation and the **agile implementation methodology** for rapid results when realising business intelligence (BI) projects.

At COSMO CONSULT, people are our focus. After all, it is people who decide whether our software is efficient or inefficient, who judge its strengths and weaknesses, who experience joy or frustration when using it and ultimately determine if it is a success. That's why we provide:

Business Software for People

cc|project

The industry solution for project planning, control and controlling based on Microsoft Dynamics NAV

Every company and every industry has its own, individual IT solution requirements. This applies in particular to companies for which planning and implementation of projects is part of their core business. With cc|project, COSMO CONSULT offers these companies a certified industry solution based on Microsoft Dynamics NAV.

cc|project is specifically tailored to the industry-specific challenges of plant construction, special-purpose machine construction, project service providers, engineers and architects as well as the construction-related industry.

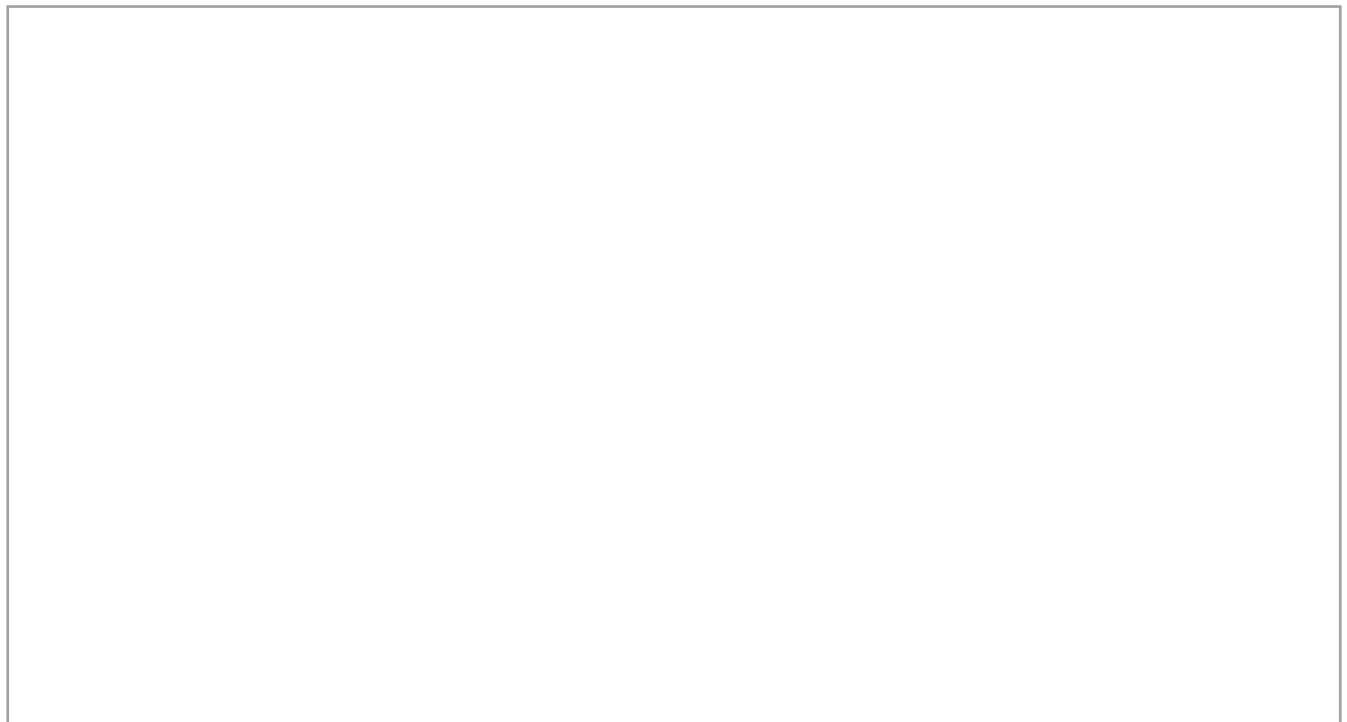
cc|project makes a significant contribution towards secure and fast ERP implementation, efficient project planning and management as well as transparent controlling and continuously up-to-date simultaneous costing and at the same time promotes interdepartmental collaboration with the areas of design and development, purchasing and MRP, production, dispatch and controlling.

The high user acceptance and added value resulting from the optimised processes and functions improves the competitiveness and transparency of the business, leading to customer satisfaction over the long term.

As a result, cc|project offers you greater reliability, transparency and flexibility in the processing of complex projects.

TARGET MARKETS

- ▶ PLANT AND SPECIAL-PURPOSE MACHINE CONSTRUCTION
- ▶ ENGINEERING AND PLANNING FIRMS
- ▶ GENERAL CONTRACTORS
- ▶ PROJECT SERVICE PROVIDERS
- ▶ CONSTRUCTION-RELATED INDUSTRY



OVERVIEW OF ENGINEER-TO-ORDER

SUPPORT THROUGHOUT THE ENTIRE PROJECT LIFE CYCLE

cc|project supports you throughout the entire life cycle of your projects:

- ▶ Planning phase
- ▶ Project costing
- ▶ Quotation creation
- ▶ Order processing
 - ▶ Planning and execution of project-specific procurement processes
 - ▶ Purchasing
 - ▶ Warehousing
 - ▶ Production
 - ▶ Service provision with time recording
 - ▶ Dispatch planning and control
 - ▶ Project invoicing
 - ▶ Billing of expense items
 - ▶ Payment plans with integrated pre-payment management
 - ▶ Milestone accounting
 - ▶ Project controlling for costs, revenues and work progress
 - ▶ Project evaluation
- ▶ Project completion
- ▶ Management of subsequent orders, such as additions, warranty and service

Planning of projects

cc|project provides you with the best possible support from the early planning stages of your projects. Thanks to project templates, extensive copying functions and intuitive system operation, you can create project structures quickly and easily.

In the hierarchical project structure, you can plan the services and work packages required for implementation of the project as well as the required material, travel costs and other expenses.

Flexible project costing

By creating the project structure, you have already established the basis for project costing. By calculating costs and revenues, you always have an overview of the anticipated profit margin. This applies both to pre-costing and to simultaneous costing during processing of the project. To determine the price of individual project items, you can refer not only to the cost prices and sales prices saved in the product master data for standard components, but also to the hourly rates for services.

For project items for which there are no standard prices, you can refer to estimated values or quotations from your suppliers. The cc|request manager helps you to create supplier requests and select the right supplier with a price comparison.

Through unit price determination at item level, you can use special project prices or project overheads. In addition, you can also set up a special overhead costing based on your own templates.

A rollup function enables you to group together items at a higher level in the form of "bottom-up costing".

Job No.	Job Description	Quantity	Unit of Measure	Total Direct Cost	Indirect Cost %	Cost %	Change %	Unit Price	Sales Price	Profit %	Budget
1	General	1	DAY	12,500.00	11	44	20,000.00	20,000.00	36.5	8,500.00	
1.1	Service	90	HR	1,000.00	11	42	100,000.00	10,000.00	36.5	1,000.00	
1.1.1	Service	200	HR	2,400.00	11	35.4	11.25	3,200.00	36.2	100.00	
1.1.2	Service	100	HR	4,800.00	11	35.4	11.25	6,000.00	36.2	1,000.00	
1.1.3	Service	400	HR	6,000.00	11	35.4	11.25	8,000.00	36.2	2,000.00	
1.1.4	Service	400	HR	1,400.00	11	35.4	11.25	4,000.00	36.2	2,000.00	
1.1.5	Service	700	HR	400.00	11	35.4	11.25	1,000.00	36.2	400.00	
1.1.6	Service	700	HR	400.00	11	35.4	11.25	1,000.00	36.2	400.00	
1.2	Non	1	PREC	800.00	11	37.9	6,000.00	1,000.00	27.9	1,000.00	
1.3	Non	1	PREC	2,000.00	11	37.9	6,000.00	6,000.00	27.9	1,000.00	
2	Travel Expenses			800.00				1,000.00			
2.1	Travel Expenses			10,000.00				20,000.00			
				10,000.00				20,000.00			

PROJECT BUDGET CALCULATION

With the budget planning function, you can fix estimated item totals and then monitor compliance with the budget ("top-down costing").

This means you have the best possible basis for reliable costing at your disposal.

Quotation creation and order release

Quotations can be created directly based on the costings. You can decide which costing items should appear in the actual quotation. Adaptations in quotations can be recognised during creation of an order and can be passed back to the project.

Through order release, the order value is codified for the project history. Thus, even in order processing, you still have an overview of the scope of the original project quotation.

Specifications manager

Companies that offer and process their projects based on specifications are provided with extensive support from the cc|specifications manager. Specifications that are available electronically in the GAEB 90, GAEB 2000, GAEB XML or ÖNORM (Austrian standard) formats can be imported directly into cc|project and further processed there.

Specifications are processed quickly and efficiently by estimating specifications items in detail based on the required materials and services. Here, you benefit from the integration in the ERP system, as all already available price information can be referred to for the costings. You can then also submit the specifications estimated in this way electronically as quotations.

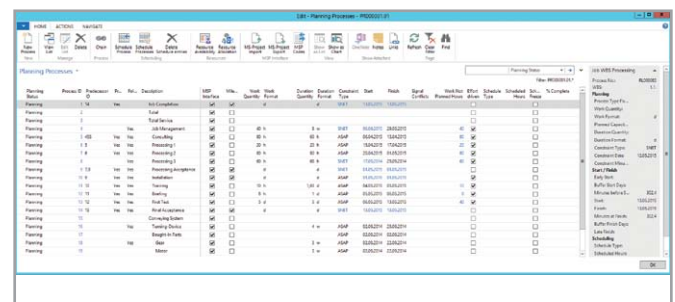
The cc|specifications manager also helps you if you wish to outsource parts of a project: You can generate requests to sub-contractors from parts of the specifications, which are in turn available to the suppliers electronically. Any quotations received based on these requests are imported into cc|project and compared with other quotations via a price comparison tool. This results in a reliable, commercial basis for later order processing.

Project workflow planning and scheduling

In addition to planning costs and revenues, cc|project also supports the planning and scheduling of projects and their workflows. The integrated resource planning allows you to keep track of departmental and employee utilisation even across different projects. Individual process steps and the time required for these can be derived from the planning processes specified in the project structure. The process steps can be linked together through predecessor relationships and can thus be rescheduled at any time.

Microsoft Project interface

A bidirectional interface is used for exchanging data with Microsoft Project. Thanks to this integration, the workflow plan for a project can be displayed graphically and modified in MS Project. Changes are saved in cc|project if desired, and are therefore available to all members of the project team.



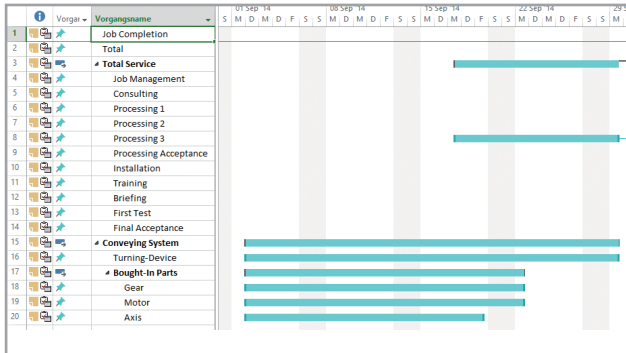
PLANNING PROCESSES

Capacity and resource planning

Using a calendar function, each employee can be assigned available capacities.

The utilisation of individual company areas can be illustrated via resource groups. Thus, you can detect bottlenecks at an early stage and take the relevant action.





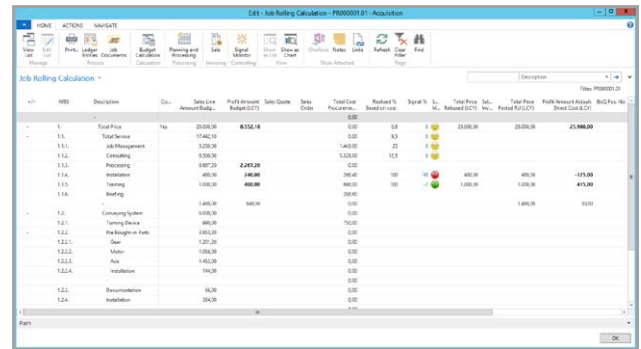
MICROSOFT PROJECT INTEGRATION

Complete project management support thanks to integration in the ERP system

Project management also includes service provision, procurement, project delivery and invoicing to the customer. Because cc|project is fully integrated with the Microsoft Dynamics NAV ERP system, you are able to plan your project management quickly and easily and control the resulting processes.

For all processing steps, there is a planning and release functionality. This means you can control which work packages and which procurement processes from the project structure should be performed. Release automatically forwards demands to Purchasing, generates warehouse requirements or production orders and releases work packages for booking. This ensures that the supporting company units are fully integrated project management process. This is the basis for creating projectbased purchase orders in good time, optimise warehouse stocks in the project transaction and supply a solid planning basis for work preparation and production.

Through status notifications on the processing processes, which can be viewed directly in the project structure, you can track the project execution transparently. This means the project team always has an overview of the distributed actions which are required for successful project management.



SIMULTANEOUS COSTING WITH SIGNAL MONITOR

Dispatch management

With cc|project, you always have component planning and controlling under control. Project-based delivery notes also mean the decoupling of invoicing and dispatch, which are important in many projects, are available as standard.

Measurement management and construction processing

If projects are billed by measurement, measurements can be planned, implemented and monitored with cc|project. Measurements are planned based on the specification items and measurement locations. Based on the plan, you can create measurement sheets, which are processed at the construction site. The signed measurement sheets then form the basis for billing of the service provided.

Processing of construction projects is also supported by functions for management of construction projects, exemptions, security retainers and construction discounts.





cc|project

The industry solution for project planning, control and controlling based on Microsoft Dynamics NAV

Project accounting

cc|project supports the current accounting methods within projects:

- ▶ Billing at fixed price with payment plans
- ▶ Billing on a costs and materials basis
- ▶ Milestone-based accounting

Create the payment plan for your customers

The optionally available integrated pre-payment management tool takes all tax conditions into account and illustrates a further significant integration advantage for the sales employee and for the subsequent departments. Thanks to the data agreed in the payment plan, you receive on time suggestions for invoicing of the respective pre-payments or final invoice. As an option, the information from the payment plan can be incorporated in your company's liquidity forecast.

Project evaluation

With cc|project, the often very time-consuming accounting evaluation of projects can be performed automatically. Thus, you can always see at what value and on what basis projects were capitalised on a due date or recognised as liabilities through accruals for future costs or impending losses. Consumption may also occur on the due date, or triggering of the capitalisations/ recognition as liabilities from the last due date.

Order network

In the course of the project work, increasing numbers of documents which are associated with the project are created in the individual company areas, such as Sales, Purchasing, Warehousing and Production. In order to maintain transparency, these documents are illustrated in a structured manner in the project order network. Simply click with the mouse and you can always access the relevant document in Microsoft Dynamics NAV quickly and easily.

Project controlling

In addition to the status information provided online, the system also calculates further indicators that can be used for tracking.

The "Signal Monitor" processes cost and progress information and visually illustrates the actual expenses for the relative cost budget.

In the "Simultaneous Costing", the main information for all project phases is displayed in a window. This information can also be prepared in Excel.

cc|project is an industry solution which helps you to optimise the implementation of business processes in project planning and controlling.

ADD-ON MODULES

- ▶ Cyclic planning
- ▶ Production data acquisition and time recording
- ▶ Mobile data acquisition
- ▶ Extended quality management
- ▶ Prepayment management
- ▶ Configuration with checklists and dynamic BOMs
- ▶ Workflow management
- ▶ and much more



[illegible]



GERMANY | FRANCE | SPAIN | SWEDEN | SWITZERLAND
CHILE | COLOMBIA | ECUADOR | MEXICO | PANAMA

www.cosmoconsult.com